

 <p>Wardell Armstrong 2017</p>	<p>PROJECT: The Archaeology of Hampsfell Hospice and Kirkhead Tower</p> <p>CLIENT: Morecambe Bay Partnership</p> <p>SCALE: 1:40,000 at A4</p> <p>DRAWN BY: AB</p> <p>CHECKED BY: AB</p> <p>DATE: May 2017</p> <p>REPORT No: CP11586</p>	<p>KEY:</p> <div data-bbox="962 1877 1166 1944">  Sites locations </div>	 <p>Reproduced by permission of Ordnance Survey on behalf of The Controller of Her Majesty's Stationery Office. © Crown copyright. All rights reserved. Licence number 100058076</p>
---	--	---	---

Figure 1: Sites locations.

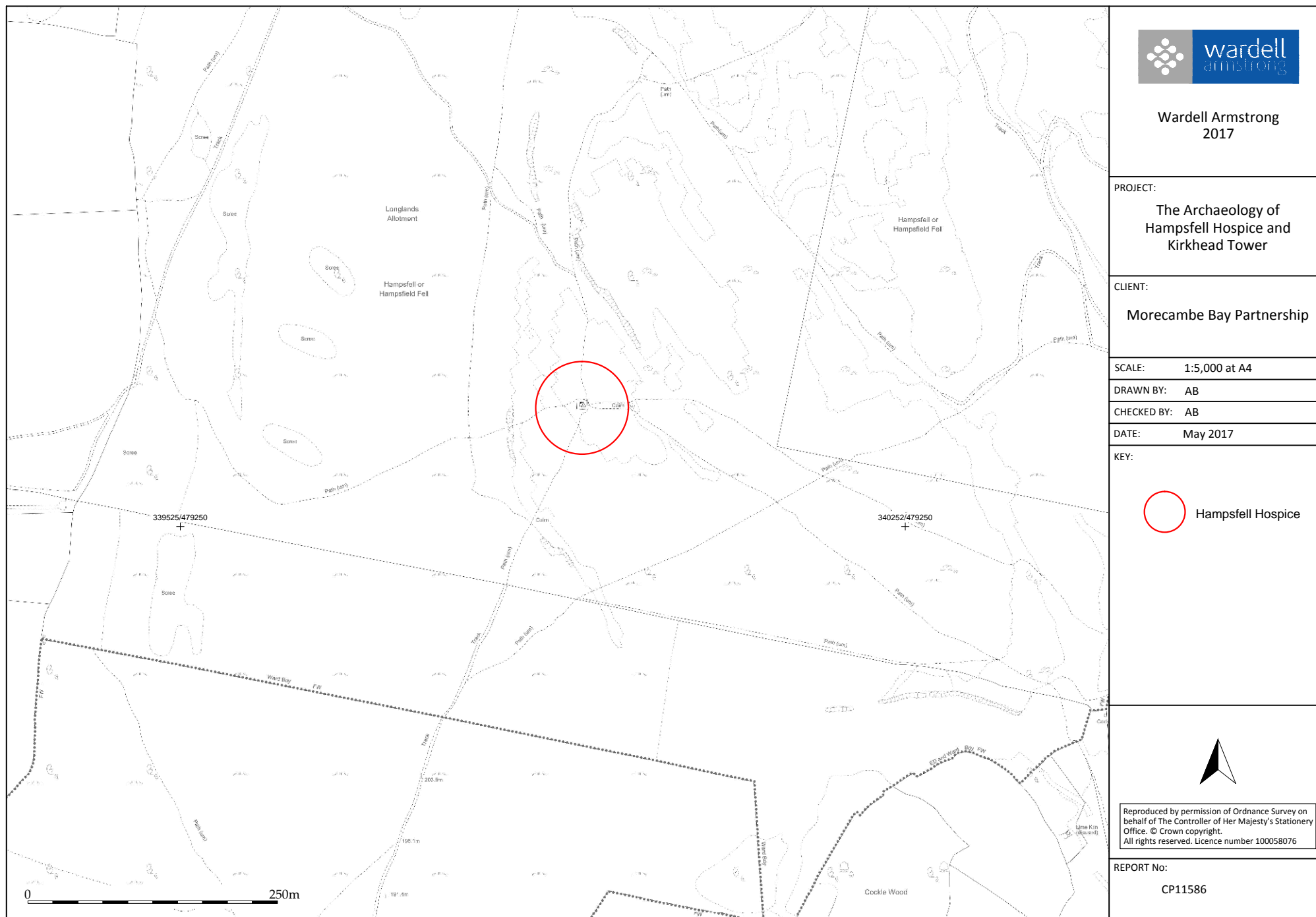
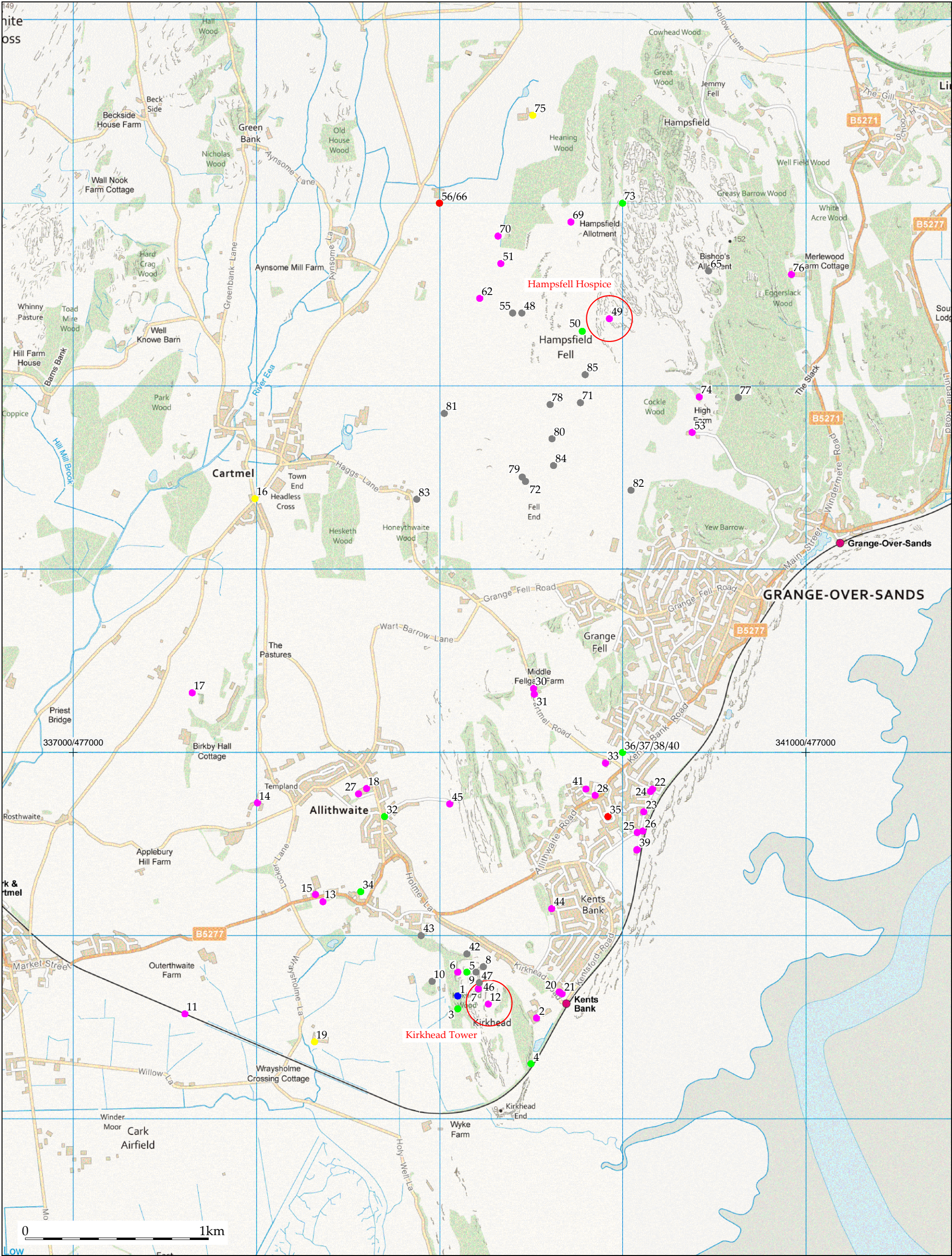


Figure 2a: Detailed location of Hampsfell Hospice.





<div><p>Wardell Armstrong 2017</p></div>	<div>PROJECT: The Archaeology of Hampsfell Hospice and Kirkhead Tower</div> <div>CLIENT: Morecambe Bay Partnership</div> <div>SCALE: 1:20,000 at A3</div> <div>DRAWN BY: AB</div> <div>CHECKED BY: AB</div> <div>DATE: May 2017</div> <div>REPORT No: CP11586</div>	<div>KEY:</div> <div><div><div></div>Prehistoric</div><div><div></div>Roman</div><div><div></div>Medieval</div><div><div></div>Post medieval/modern</div><div><div></div>Multi-phase</div><div><div></div>Unknown</div></div>	<div></div> <div>Reproduced by permission of Ordnance Survey on behalf of The Controller of Her Majesty's Stationery Office. © Crown copyright. All rights reserved. Licence number 100058076.</div>
---	---	---	---

Figure 3: Location of heritage assets.